

# P-100 SERIES SLIDING DOORS



**SUPER-SLIM SIGHTLINES**



**SPITFIRE  
DOORS**

MAKE A GRAND ENTRANCE

# SPITFIRE FRAMELESS SLIDING DOORS. WHAT DO YOU WANT YOUR VISION TO BE?

Our vision is yours. Because our guess is that you'd prefer a vision of your garden or the great outdoors in preference to a less than great obstructive door or window!

At Spitfire Doors, we specialise in installing frameless doors and windows in homes and commercial buildings across the UK.

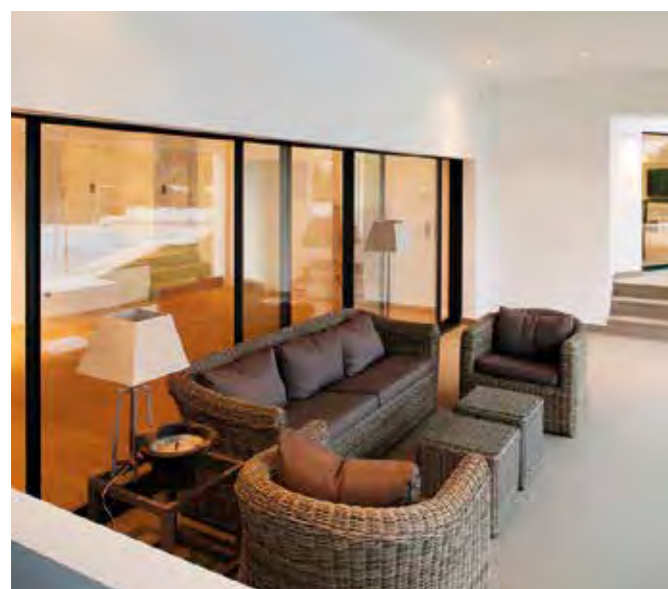


## BENEFITS YOU WON'T SEE!

It could be said that, in one way, you won't see the benefits of our superb range of P-100 frameless doors! Because our vision from day one was to take glazing to a whole new level by simply making it invisible.

And, to achieve just that, our single-minded commitment to product and system development ensures that we are always at the very forefront of glazing technologies.





## KEY FEATURES

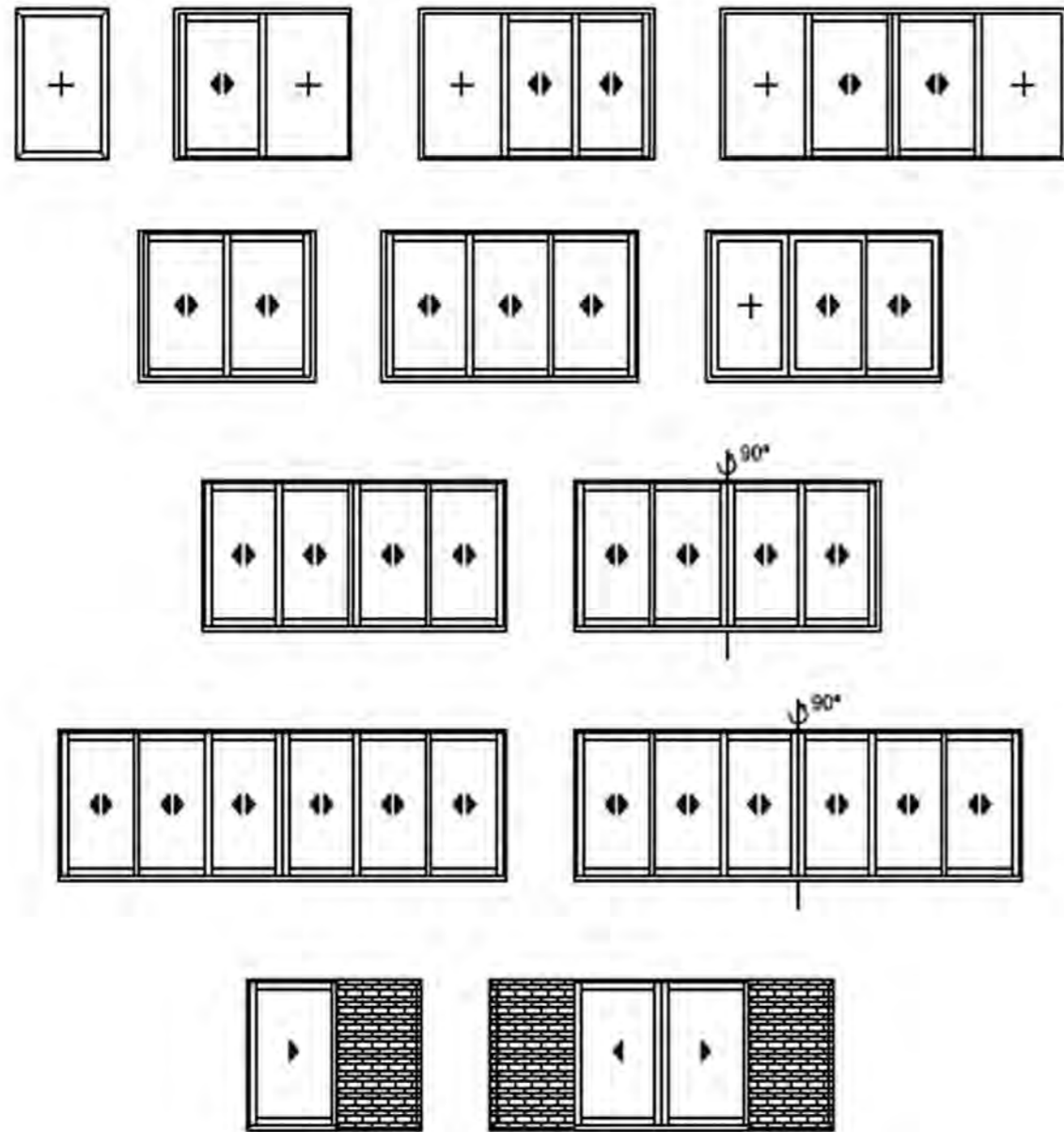
- Utilising the natural strength of aluminium to create slim thermally broken profiles
- Low maintenance, hard wearing powder coated aluminium
- 20mm sight lines
- Multi point locking system
- U values from 1.3W/M<sup>2</sup>k
- Moving corner posts/options
- Automated opening option
- Flush tracks and slot drainage available
- A variety of glazing options including solar control and easy clean
- Up to 4 tracks available providing 80% opening

## YOUR VISION REALISED... BEAUTIFULLY

Whatever your vision might be, our team can bring it to life beautifully, smoothly and seamlessly, from planning to completion. And, with multiple configurations available, your imagination really is the limit to make your dreams reality.



## CONFIGURATIONS



## SPECIFICATION DATA

<b>Applications</b>	All general light applications.
<b>Features</b>	P-100 sliding doors incorporate frameless design with 20mm sightlines allowing for as much daylight as possible. Recessed tracks allow for as little interrupted views as possible. Highly efficient double glazed units with thermally broken aluminium allow for low U values.
<b>Colour</b>	Aluminium able to be painted to any RAL, Syntha Pulvin and BS colours.

## PERFORMANCE

While all calculations such as wind-loading, U-values, size and weight limitations are calculated on a project basis these are the average values for an average door.

<b>U Values</b> 1.3W/m	2K (Using a 1.1W/m <sup>2</sup> K glass unit)
1.1W/m	2K (Using a 0.7W/m <sup>2</sup> K glass unit)
<b>Wind Resistance</b>	EN 12210:2000 Class C5
<b>Water Tightness</b>	EN 12208:2000 Class 7A
<b>Air Permeability</b>	EN 12207:2000 Class 4
<b>Document Q</b>	Compliant
<b>Document L</b>	Compliant

## DIMENSIONS

<b>Maximum Dimension</b>	Each panel can go 3000mm high by 3000mm wide, please enquire if you would like to go outside these sizes.
<b>Maximum Weights</b>	500kg – please enquire if you would like to go outside this weight.
<b>Frame Depth</b>	44mm
<b>Glazing Thickness</b>	28-32mm double glazed units – triple glazing available on request.



# OUR SHOWROOM PARTNERS. SELECTED AND AUTHORISED BY SPITFIRE

You'll be in good hands with our Design Partners. Because Spitfire Doors has appointed a national network of over 30 authorised Design and Installation Partners, many with showrooms, so you can get up close and personal with the Spitfire range for yourself. Our Partners can discuss your requirements, measure up your property and install your beautiful new front door without fuss or mess.



Contact the Spitfire team and we'll put you in touch with your nearest Spitfire Partner.

**01625 412 570**

[sales@spitfiredoors.co.uk](mailto:sales@spitfiredoors.co.uk)

[spitfiredoors.co.uk](http://spitfiredoors.co.uk)

Your local Design Partner:



**SPITFIRE  
DOORS**

MAKE A GRAND ENTRANCE